

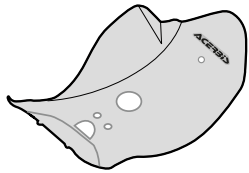
# SKID PLATE SUZUKI RMZ 450

## SOTTOMOTORE SUZUKI RMZ 450

**ACERBIS®**

COD. 500005778

### ACERBIS PARTS



**A-** (1 pcs.)



**B-** (1 pcs.)



**C-** (1 pcs.)



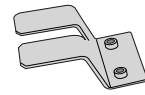
**D-** (1 pcs.)



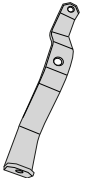
**E-** (2 pcs.)



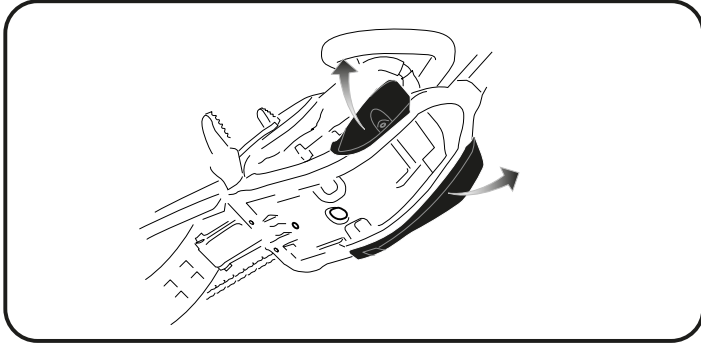
**F-** (2 pcs.)



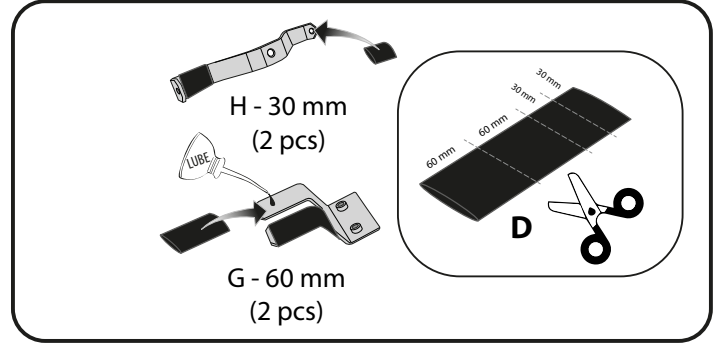
**G-** (1 pcs.)



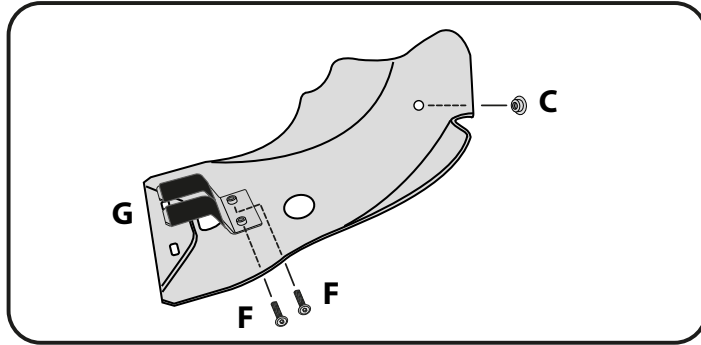
**H-** (1 pcs.)



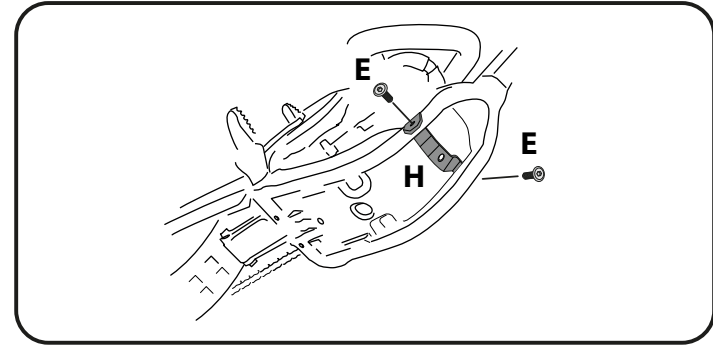
- 1. Remove the two original protections.**  
1. Smontare le due protezioni originali.



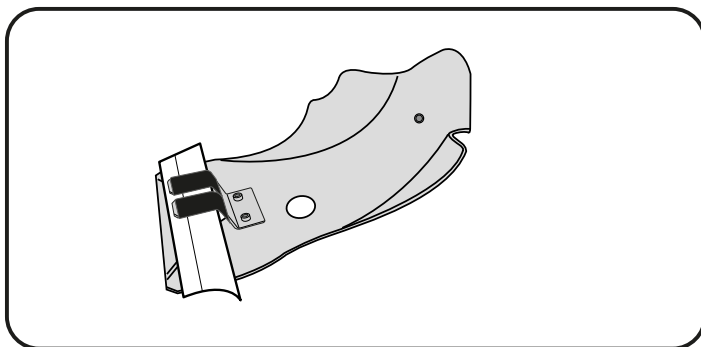
- 2. Put on the brackets G/H the two pads.**  
2. Infilare sulle staffe G/H i 2 gommini.



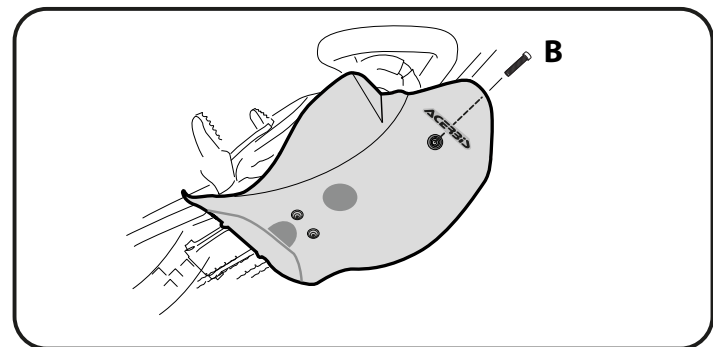
- 3. Mount the bracket G on the skid plate using the screws F. Introduce the bushing C.**  
3. Montare la staffa G sul sottomotore usando le viti F. Inserire la boccia C.



- 4. Mount the bracket H on the frame using the screws E.**  
4. Montare la staffa H sul telaio usando le viti E.



- 5. Mount the skid plate on the frame.**  
5. Montare il sottomotore sul telaio.



- 6. Fix the skid plate using the screw B.**  
6. Fissare il sottomotore utilizzando la vite B.

### WARNING!

Use at your own risk. Check the security of your device before you ride. Be sure that you follow the instructions installing the Acerbis products. Do not ride if there is missing or damaged hardware. If this is the case, take the item immediately back to your dealer. Make sure the throttle and other controls are free every time you ride. Lack of attention to instruction and warning could lead to interference with the controls, loss of control, and an accidents. Acerbis recommends that installation must be done by a licensed mechanic and that only Acerbis is original parts are used during fitting. Acerbis makes no guarantees or representations, express or implied, regarding the fitness of its products for any particular purpose. Acerbis makes no guarantees or representations, express or implied, regarding the extent to which its product protect individuals or property from injury or death or damage.